



Electrical & Automation

## NQube

### Outdoor Compact Substation



**NQube** is part of the wide range of product offerings from Lauritz Knudsen Electrical & Automation. It is a compact MV/LV substation for outdoor application, designed in line with IEC 62271 - 202. It functions as a substation in secondary distribution networks. Incorporating LK's standard electrical components, NQube provides maintenance-free operation throughout its life-span.

#### **NQube** is:

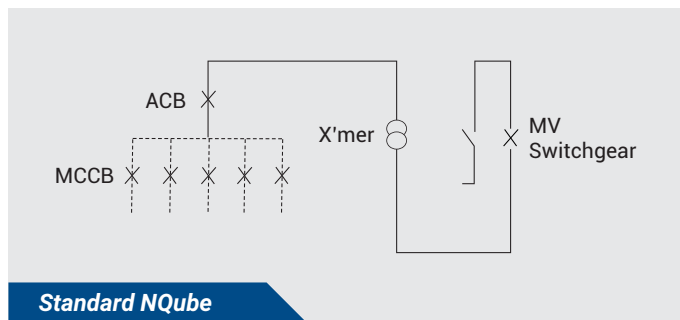
- Fully factory assembled & tested
- Modular & compartmentalized
- Reinforced with specially designed ventilation system
- Completely safe for operators
- Ready for installation & network connection
- SCADA compatible & ready to use in smart grid

---

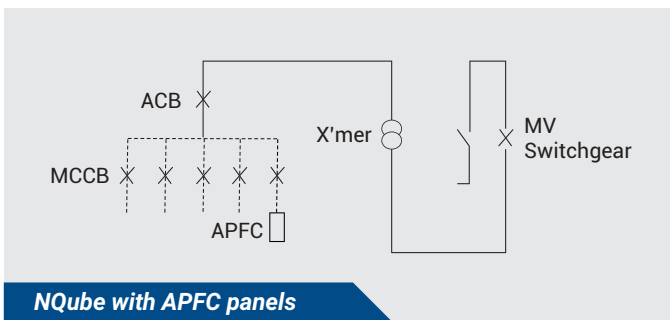
Lauritz Knudsen Electrical & Automation designs, manufactures and markets a wide range of low voltage and medium voltage electrical systems, control and automation systems, electrical products and metering and protection systems.

---

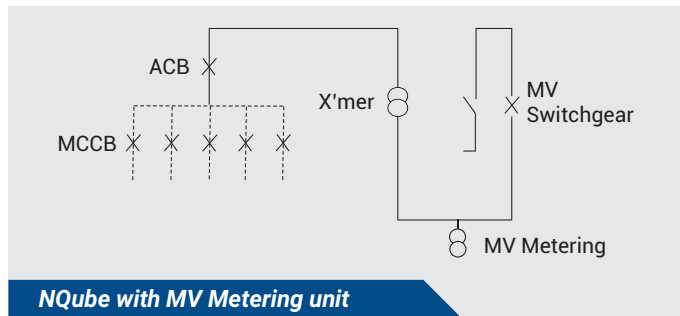




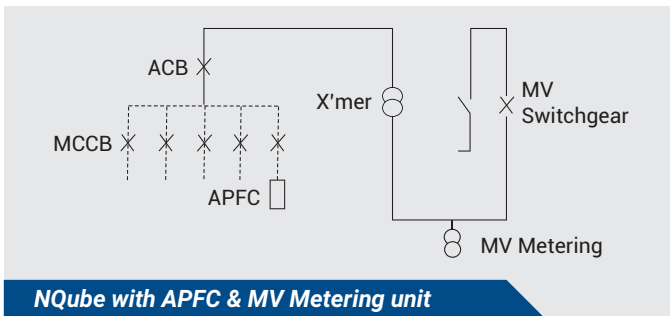
**Standard NQube**



**NQube with APFC panels**



**NQube with MV Metering unit**



**NQube with APFC & MV Metering unit**

three way RMU for ring applications are available

#### LV switchgear

- Rated up to 2000A, 440V
- Completely customizable
- With LK E&A's proven standard components i.e. Air Circuit Breakers, Moulded Case Circuit Breakers etc.
- Flexibility in arrangements & configurations
- Maximum 8 nos. of outgoing MCCB feeders with one incomer ACB feeder

#### Transformer

- Up to 1250kVA
- Choice of oil type & dry type transformers
- Hermetically sealed corrugated type oil transformer
- Minimal losses
- Off Load Tap Changing
- On load Tap Changing OLTC with RTCC and AVR
- Complaint to K/10 as per IEC 62271 - 202

#### MV switchgear

- LK E&A make 12kV, 630A, 21kA, RMU
- Robotic welding of gas tank ensures leakage free operation
- Internal arc fault tested for 21kA, 1S complying with AFLR IEC 62271 - 200
- Ample space for CT mounting
- Minimal maintenance & sealed for life
- No exposure to live parts

Product type	100-250 kVA	315-630 kVA	750-1000 kVA	1250 kVA
Rated voltage (MV / LV)	12kV / 440V			
Rated current (MV / LV)	630A / 500A	630A / 800A	630A / 1600 A	630A / 2000A
Rated Power Frequency Withstand Voltage	28kV			
Rated Lightning Impulse withstand voltage	75kV			
Rated Short Time Current rating - MV / LV	21kA(3s) / 50kA(1s)			
Dimension (L x B x H) in mm*	2700 X 2100 X 2570	3000 X 2100 X 2570	3400 X 2100 X 2570	3700 X 2100 X 2570
Ingress Protection (MV / Trans / LV)	IP 54 / IP23D & 34D / IP54			
Temperature Class	K10			

\* Subject to change as per project specifications & Transformer Dimensions.

\* For Product Type 1600kVA, 2000kVA & 2500kVA-Please contact L&T Electrical and Automation



Electrical & Automation

#### Lauritz Knudsen Electrical & Automation - Head Office

Lauritz Knudsen Electrical & Automation, TC - II, Tower B - 7<sup>th</sup> floor, Saki-Vihar Road, Powai, Mumbai 400 072 Tel.: +91 22 6705 1748 Fax: +91 22 6705 1556  
Email: ese-cmt@Lntebg.com Website: www.Lntebg.com

#### Sales Office – India

Bengaluru, Chennai, Hyderabad, Kolkata, Mumbai, New Delhi, Pune, Vadodra

#### Sales Office – International

Australia, Indonesia, Kuwait Malaysia, Oman, Qatar, Saudi Arabia, South Afrika, South Korea, Turkey, UAE

The information contained herein is correct at the time of printing, but as products and manufacturing processes undergo continuous development, this information is subject to change without notice. and the company cannot be held liable for any alleged misinterpretation howsoever arising.